

PRODUCT INFORMATION PACKET

Model No: 145TBDR5345
Catalog No: I147
2,1800,DP,145T,1/60/115/208-230
Open Drip Proof (ODP)



Regal and Marathon are trademarks of Regal Beloit Corporation or one of its affiliated companies.
©2018 Regal Beloit Corporation, All Rights Reserved. MC017097E



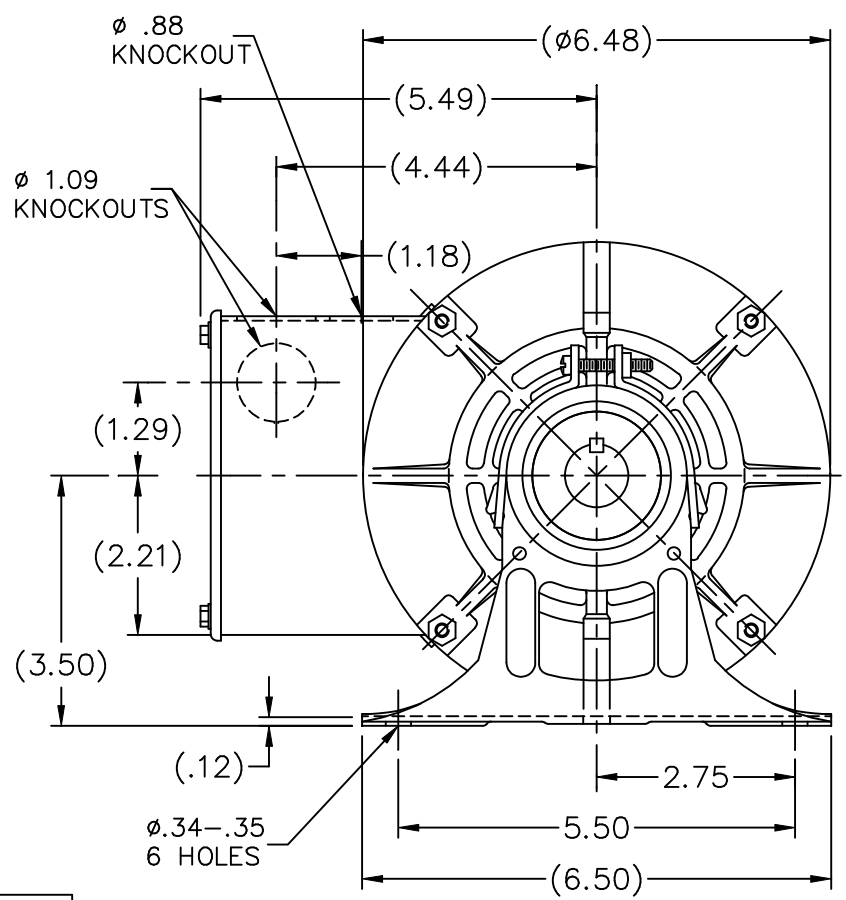
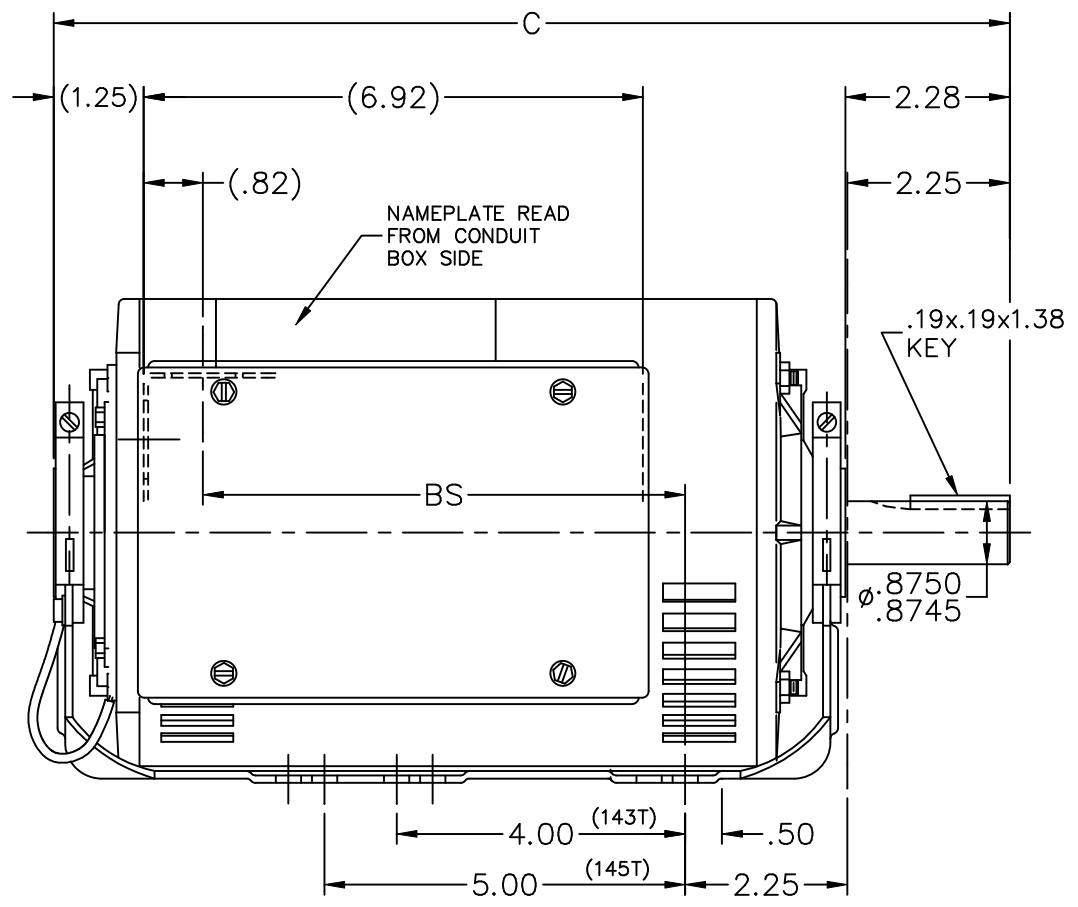
Nameplate Specifications

Output HP	2 Hp	Output KW	1.5 kW
Frequency	60 Hz	Voltage	115/208-230 V
Current	21.0/11.3-10.5 A	Speed	1740 rpm
Service Factor	1.15	Phase	1
Efficiency	78.5 %	Duty	Continous
Insulation Class	B	Design Code	L
KVA Code	J	Frame	145T
Enclosure	Drip Proof	Overload Protector	No
Ambient Temperature	40 °C	Drive End Bearing Size	6205
Opp Drive End Bearing Size	6203	UL	Recognized
CSA	Y	CE	Y
IP Code	22		

Technical Specifications

Electrical Type	Capacitor Start Capacitor Run	Starting Method	Across The Line
Poles	4	Rotation	Selective Counterclockwise
Mounting	Resilient Base	Motor Orientation	Horizontal
Drive End Bearing	Ball	Opp Drive End Bearing	Ball
Frame Material	Rolled Steel	Shaft Type	T
Overall Length	14.22 in	Frame Length	9.56 in
Shaft Diameter	0.875 in	Shaft Extension	2.28 in
Assembly/Box Mounting	F1 Only		
Outline Drawing	A-100397-956	Connection Diagram	A-102006-51

This is an uncontrolled document once printed or downloaded and is subject to change without notice. Date Created: 06/29/2018



DASH	FR.	C	BS		DASH	FR.	C	BS	
					956	140T	14.22	7.68	
856	140T	13.22	6.68						

NO.	REVISION	BY & DATE	CHK	TOLERANCES UNLESS SPECIFIED	
				DEC.	INCHES
3	UPDATED DRAWING	RJW 03-28-2007		.XX	±.03
2	REDRAWN IN AUTOCAD	TAT 09-01-2004	ML	.XXX	±.005
1	NEW DRAWING	3692390 SLJ 05-10-1990		.XXXX	±.0005
				ANG	±7'30"

MARATHON ELECTRIC

TITLE OUTLINE
140T FR. - BB - DR.PR. - 1Ø - RESIL. MT.

MAT'L.
FINISH

RFP
DIST WP

CAD FILE 100397

DRAWN	SLJ 05-10-1990
CHK	GK 05-11-1990
APPD	DN 05-11-1990
SCALE	3=8
REF	
FMF	
PREV	
SIZE	A
DRAWING NO.	100397
PAGE	OF
REV.	3

```
ERROR: undefined  
OFFENDING COMMAND: myset
```

```
STACK:
```

```
/$x
```